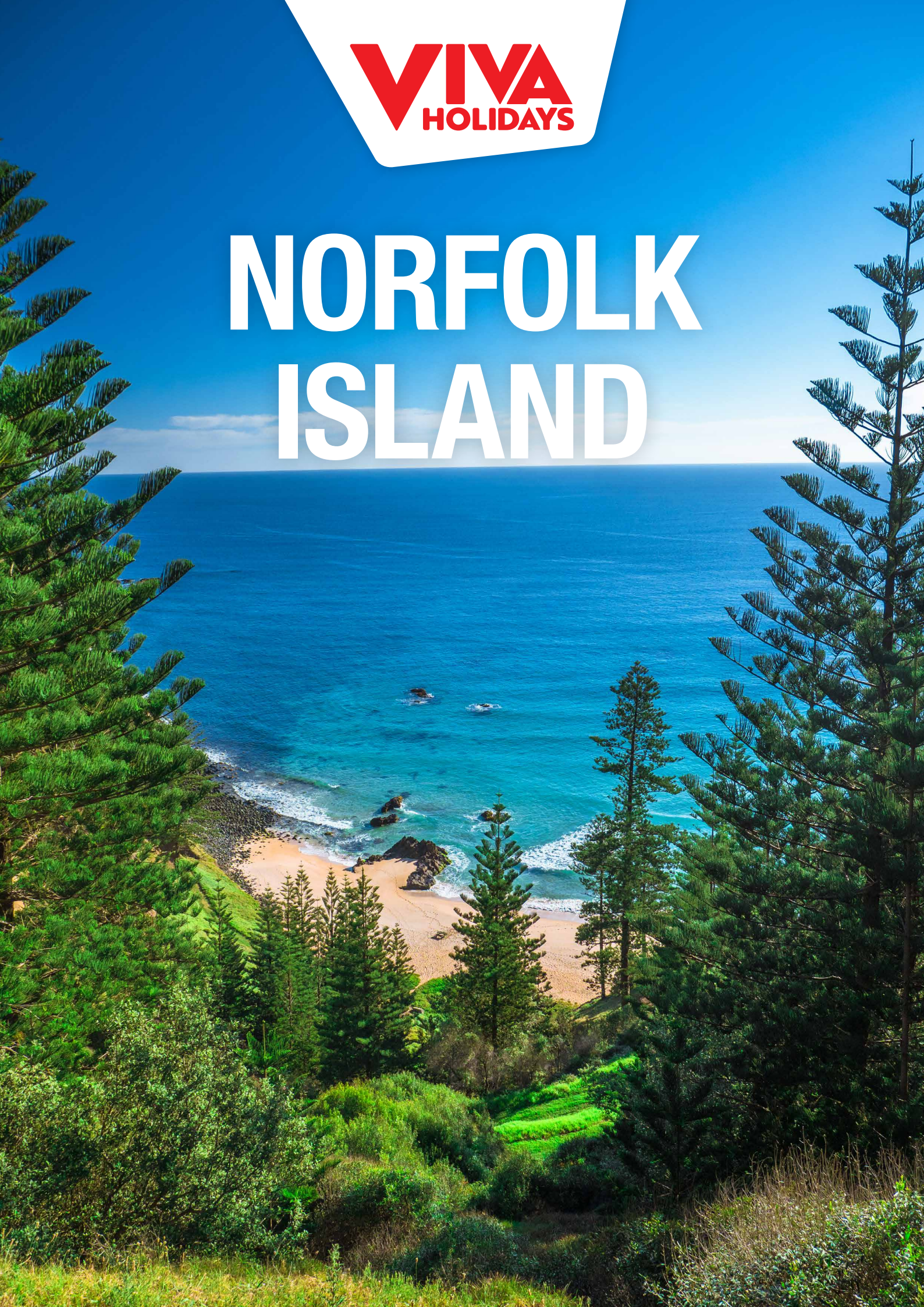


VIVA
HOLIDAYS

NORFOLK ISLAND





WELCOME TO NORFOLK ISLAND

A subtropical paradise with a fascinating history and culture awaits. Norfolk Island is the ideal destination for fun, relaxation, adventure or all the above!

Just a two and a half hour flight from Sydney or Brisbane, Norfolk Island has an idyllic climate making it the perfect year-round holiday destination. From gorgeous green Norfolk pine forests to stunning golden sand beaches and friendly locals who always say “Watawieh?” (how are you?), you’ll love everything about Norfolk Island.

So, what are you waiting for? There’s never been a better time to discover why visitors keep coming back to Norfolk Island.

DISCOVER NORFOLK ISLAND

CONVICT HISTORY

A harsh penal colony from 1788 to 1855, Norfolk Island buzzes with culture and history. Today, the island is home to the descendants of the famous Mutiny of the Bounty who will welcome you with warm hospitality and regale you with their stories. A must-see is the World Heritage Listed Kingston and Arthur's Vale Historic Area. Stroll through the beautiful stone buildings and visit the four Kingston museums to see archaeological remains and artefacts. Don't miss the amazing 360° panoramic painting depicting the history of the Bounty adventurers at Fletcher's Mutiny Cyclorama, before heading over to the Bounty Folk Museum (reopening February 2021).



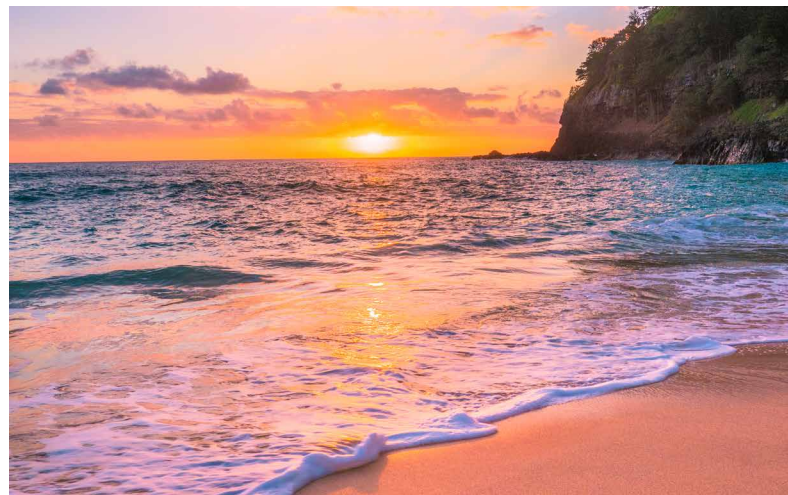
FRESH FOOD

Fast becoming a destination for food lovers, Norfolk offers genuine paddock-to-plate eating. Join the Taste of Norfolk tour and visit a beef and dairy farm supplying fresh milk for local cheeses. Dine on succulent beef accompanied by salads made with vegetables grown on the island. Enjoy the catch of the day freshly caught in the surrounding waters. Sample local artisan produce including Norfolk honey, Hilli Goat cheese, sea salt and even wine – Norfolk Island boasts its own boutique vineyard and winery, Two Chimneys. Be sure to try Norfolk's distinct cuisine, a unique blend of 18th century English and Pacific recipes inherited from the Bounty Mutineers and their Tahitian wives. Some favourites include savoury fish or meat fritters, banana dumplings and slow-baked banana phili.



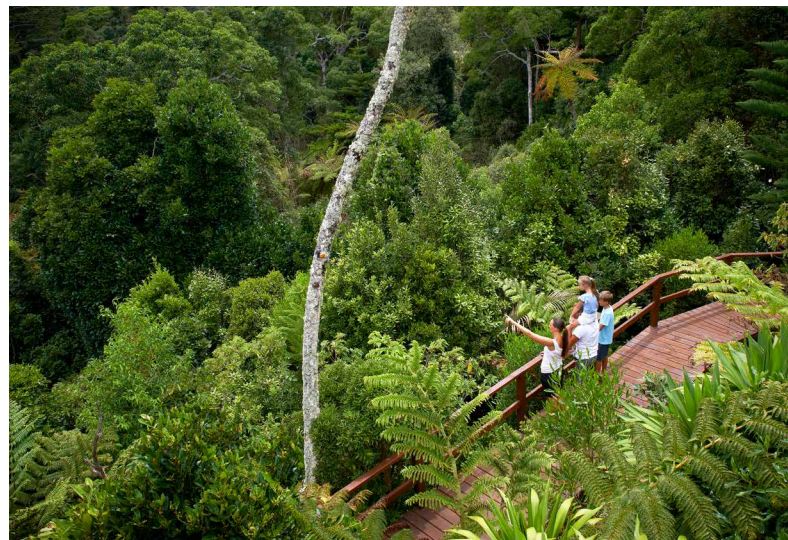
BEACHES & BAYS

Discover Norfolk's stunning beaches and bays. The most spectacular and secluded is Anson Bay. Nestled at the bottom of steep cliffs, only those willing to trek down the walking track will be rewarded with a stretch of pristine sand. The view from the top is just as incredible and is the perfect place to watch a beautiful sunset. To see colourful coral and tropical fish, grab your snorkel and fins and head to Emily Bay Lagoon. The water is crystal-clear and the golden sand is shaded by Norfolk Pines, making it the perfect spot for the whole family. Keen fishermen will love 'Bumpy', officially known as Creswell Bay. This secluded rocky beach is popular for rock fishing and, on a good day, surfing.



NORFOLK ISLAND NATIONAL PARK

Dramatic seascapes and towering forests sum up Norfolk Island National Park. With a range of bushwalking opportunities, explore the rich diversity of bird and plant life on the island as you meander along the lush palm forest walking tracks – there are plenty to choose from! From the Captain Cook Monument you'll be rewarded with spectacular coastal views. Take in the incredible panorama from the two highest points on the island, Mount Pitt and Mount Bates. Wind your way through giant tree ferns and rare Norfolk Island palms along the Palm Glen Circuit. Keep your eyes open for the Norfolk Island green parrot flying between pines along the Red Road Track.



NORFOLK ISLAND SIGHTSEEING



CONVICT KINGSTON TOUR

Discover World Heritage Listed Kingston. Hear about Norfolk Island's first settlers, the Polynesians who arrived 900 years ago, learn about the first and second settlements and the facts and legends associated with each, and how Norfolk became home to the descendants of the infamous Bounty mutiny before walking through the historic cemetery.

INCLUDES:

- Uncover World Heritage Listed Kingston
- Refreshments • Local guide
- Return transfers from Burnt Pine township accommodation

Operator: Baunti Tours

Duration: 3 hours 30 minutes

Departs: Wed from Burnt Pine at 1pm

Valid for travel: Wed & Sun 15 Nov 20 - 31 Mar 22 from **\$49*** per adult **\$25*** per child (4-12yrs)



BREAKFAST BUSHWALK

Your walk will take you through diverse habitats from rainforest to clifftops, between enormous pines and white-woods and surrounded by seabirds. Learn about Norfolk's flora and fauna and see some of the 40 endemic species of plants and birds. Your efforts will be richly rewarded by a delicious barbecue breakfast with all the trimmings. While the topography is hilly, the pace is relaxed and your guides can cater to a range of fitness levels.

INCLUDES:

- Barbecue breakfast • Local guide
- Return transfers from Burnt Pine township accommodation

Operator: Baunti Tours

Duration: 2 hours 30 minutes

Departs: Thu from Burnt Pine at 7:30am

Valid for travel: Thu 15 Nov 20 - 31 Mar 22 from **\$55*** per adult **\$29*** per child (4-12yrs)



1856 THE UNTOLD STORY

On 8 June 1856 a total of 194 people, descendants from the Bounty, arrived on Norfolk Island from Pitcairn Island aboard the Morayshire. They arrived to a recently abandoned penal settlement set aside for the 'worst of the worst', it was full of ghosts and memories. The 1856 untold story will follow their journey in the World Heritage Listed Kingston area. The past will be brought to life with audio aboard the coach and stories of the families and how they adapted to their new life on Norfolk Island.

INCLUDES:

- Historic evening tour • Informative commentary on board
- Return transfers from Burnt Pine township accommodation

Operator: Baunti Tours

Duration: 1 hour 30 minutes

Departs: Tue from Burnt Pine at 7:30pm

Valid for travel: Tue & Sat 15 Nov 20 - 31 Mar 22 from **\$55*** per adult **\$29*** per child (4-12yrs)



COLLEEN MCCULLOUGH HOME TOUR

Colleen McCullough, world renowned author of 24 books, called Norfolk Island home for almost 36 years. Visit her much-loved sanctuary 'Out Yenna' and be escorted through her magnificent home where you will see priceless artefacts gathered from all over the world. This is a glimpse into the life of a modern day literary icon.

INCLUDES:

- Guided tour of Colleen McCullough's home
- Informative commentary
- Return transfers from Burnt Pine township accommodation

Operator: Baunti Tours

Duration: 2 hours

Departs: Tue to Fri from Burnt Pine at 9:30am

Not suitable for children under 13 yrs.

Valid for travel: Tue-Fri 15 Nov 20 - 31 Mar 22 from **\$59*** per adult

IMPORTANT INFORMATION: *Agents may charge service fees and/or fees for card payments which vary. A fee will apply for payments made by debit and credit cards. Please check this fee with us or your travel consultant when booking. Conditions apply. Refer to back page for full details.

NORFOLK ISLAND SIGHTSEEING



TASTE OF NORFOLK

Taste of Norfolk will take you to a beekeeper's home where you will view flow hives, learn about the fascinating local honeybees and see their incredible flight path to their hives. Stop at a beef and dairy farm to learn about supplying milk for local cheese and fresh milk for the market place. Taste local beef sausages, then watch a cooking demonstration that will teach you about the traditional island way of cooking handed down by Tahitian foremothers.

INCLUDES:

- Tastings of honey, local sausages and banana fritters
- Meet three passionate locals • Informative commentary
- Return transfers from Burnt Pine township accommodation

Operator: Baunti Tours

Duration: 3 hours

Departs: Thu from Burnt Pine at 1pm

Valid for travel: Tue & Thu 15 Nov 20 - 31 Mar 22 from **\$65*** per adult **\$35*** per child (4-12yrs)



PROGRESSIVE DINNER

The three-course Progressive Dinner is the perfect way to get a taste of the real Norfolk lifestyle. Visit three lovely island homes where you can relax and enjoy the home-cooked food, bursting with the goodness of fresh island produce. Chat with your fellow diners and soak up the stories of your island hosts as they share their passion for their little island paradise.

INCLUDES:

- Three course dinner
- Local guide
- Transport between venues
- Return transfers from Burnt Pine township accommodation

Operator: Baunti Tours

Duration: 3 hours

Departs: Thu from Burnt Pine at 6pm

Valid for travel: Tue & Thu 15 Nov 20 - 31 Mar 22 from **\$79*** per adult **\$39*** per child (4-12yrs)



ISLAND FISH FEAST

Enjoy an eagle-eyed view of the tiny crescent-shaped beach and the magnificent spread of ocean stretching to the far horizon while you attend this glamorous picnic. Scrumptiously fresh, local fish is prepared the local way and accompanied with a range of seasonal island dishes including those passed down from Polynesian foremothers. This extends even to dessert. The feast kicks off with entertainment by a local singer and Tahitian-style dancers.

INCLUDES:

- Island Fish Feast including main dishes and dessert
- Live entertainment
- Return transfers from Burnt Pine township accommodation

Operator: Baunti Tours

Duration: 3 hours

Departs: Sat from Burnt Pine at 5pm

Valid for travel: Thu & Sat 15 Nov 20 - 31 Mar 22 from **\$85*** per adult **\$45*** per child (4-12yrs)



COMMANDANTS DINNER

This factual yet fun dinner theatre is a great way to learn about Norfolk's history. Embark on an entertaining journey back in time and you will hear the Commandants' stories about the notorious Convict Settlements and how the convicts were treated. Listen to a chilling recall of one of the infamous rebellions and marvel at how the Commandants and their families adapted to life in a penal colony. Explore their great challenges, impressive successes and shameful secrets. A three-course dinner menu of traditional English fare will compliment the theatrical setting.

INCLUDES:

- Live theatre show • Three course dinner
- Return transfers from Burnt Pine township accommodation

Operator: Baunti Tours

Duration: 3 hours

Departs: Wed from Burnt Pine at 6pm

Valid for travel: Wed 15 Nov 20 - 31 Mar 22 from **\$89*** per adult **\$39*** per child (4-9yrs)

IMPORTANT INFORMATION: *Agents may charge service fees and/or fees for card payments which vary. A fee will apply for payments made by debit and credit cards. Please check this fee with us or your travel consultant when booking. Conditions apply. Refer to back page for full details.

NORFOLK ISLAND

SEAVIEW NORFOLK ISLAND

★★★

Overlooking the South Pacific Ocean and nearby Phillip Island, Seaview Norfolk Island boasts unequalled 120 degree ocean views and offers a range of accommodation styles from standard motel rooms to self-contained apartments and cottages. The property is centrally located and is a short walk to the shopping district, restaurants, bars and cafés. The Kingston historical area and swimming beaches are only a few minutes' drive away.

INCLUDES:

- 7 nights in a One Bedroom Ocean View Upstairs Apartment
- Continental breakfast daily
- Half day Island Tour
- FREE Wi-Fi
- Return coach transfers from airport to hotel

From **\$419*** per person twin share



DAYDREAMER HOLIDAY APARTMENTS

★★★

Daydreamer Holiday Apartments is the perfect property for your relaxing Norfolk Island getaway. Set in quiet landscaped gardens, yet only a few minutes' walk to the centre of town you'll be close to shops, restaurants and the National Park and Botanic Gardens. Comfortable apartments feature a fully equipped kitchen and the property has a large barbecue area for guest use providing you with the independence of self-catering.

INCLUDES:

- 7 nights in a One Bedroom Apartment
- Small automatic 4-door rental car for duration of stay[^]
- Return coach transfers from airport to hotel

From **\$519*** per person twin share



PANORAMA SEASIDE APARTMENTS

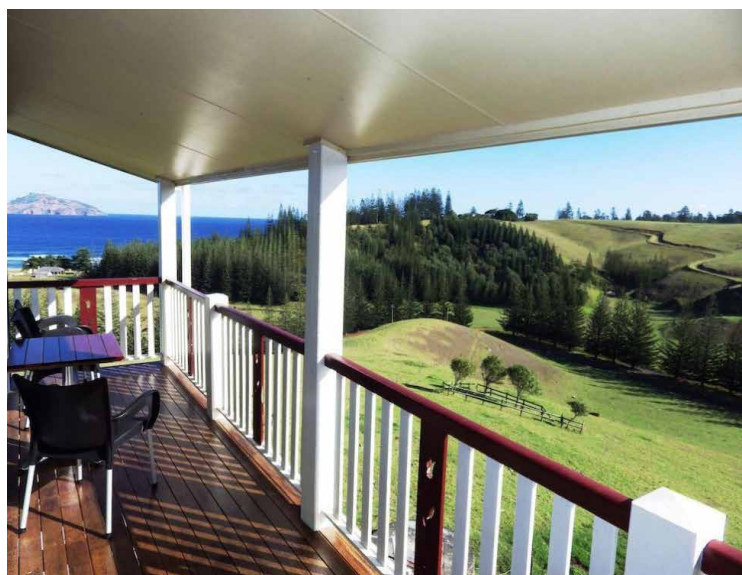
★★★

Panorama Seaside Apartments is located in the World Heritage Listed area of Kingston and is only a 500 metre walk to the beach. The property's outlook is spectacular with views of the deep rural valley, the convict-era buildings, the lagoon, reef and out over the ocean to uninhabited Phillip Island. The apartments are comfortable and self-contained.

INCLUDES:

- 7 nights in a 1 Bedroom Panorama Valley View Apartment
- Return coach transfers from airport to hotel

From **\$519*** per person twin share



IMPORTANT INFORMATION: *Valid for travel: Seaview Norfolk Island 15 Nov 20 - 31 Mar 21, Daydreamer Holiday Apartments 1 Jun - 31 Aug 21. Add on an extra \$104* per person twin share for travel 16 Jan - 31 May, 1 Sep - 19 Dec 21, 16 Jan - 31 Mar 22. [^]Includes vehicle damage excess of \$2500. Panorama Seaside Apartments 17 May - 20 Sep 21. Add on an extra \$103* per person twin share for travel 16 Nov 20 - 16 May, 21 Sep 21 - 31 Mar 22. Agents may charge service fees and/or fees for card payments which vary. A fee will apply for payments made by debit and credit cards. Please check this fee with us or your travel consultant when booking. Conditions apply. Refer to back page for full details.

NORFOLK ISLAND



COAST NORFOLK ISLAND

★★★★☆

Coast Norfolk Island is a small collection of private cottages, houses and apartments that take advantage of the breathtaking views overlooking green pastures to the blue Pacific Ocean and out to Phillip Island. Set within the World Heritage Kingston and Arthur's Vale historic area on 30 acres of peaceful gardens, Coast is less than a five minute drive to beaches or the town centre. All of the accommodation options sit among the lush tropical gardens and have a private balcony, sea views and indoor/outdoor living areas. Enjoy use of the large saltwater pool, gazebo area with barbecues and the on-site day spa.

INCLUDES:

- 7 nights in a Studio Apartment
- Rental car for duration of stay including insurance
- Bike hire
- Use of snorkelling gear
- Car parking
- Return coach transfers from airport to hotel

UPGRADE: To a One Bedroom Garden Cottage with Valley View from \$65* per person twin share

From **\$559*** per person twin share



CHANNERS ON NORFOLK GARDENSIDE APARTMENTS

★★★★☆

Channers on Norfolk has large, private apartments set among two acres of magnificent subtropical gardens with native trees, palms, ferns, fruit trees and flowering hibiscus. The Cyclorama, cafés, restaurants and shops of Burnt Pine are a leisurely stroll away, while Norfolk's beautiful swimming and snorkelling beaches, golf course and World Heritage convict areas are a short drive. Each apartment is fully self-contained and has one to three bedrooms, each with their own en suite.

INCLUDES:

- 7 nights in a One Bedroom Gardenside Apartment
- Half day Island Tour
- FREE Wi-Fi
- Return coach transfers from airport to hotel

UPGRADE: To a One Bedroom Gardenside Apartment with rental car from \$125* per person twin share

From **\$575*** per person twin share

IMPORTANT INFORMATION: *Valid for travel: Coast Norfolk Island 15 Nov 20 - 31 Mar 22. Channers on Norfolk Gardenside Apartments 15 Nov 20 - 31 Mar 22. Agents may charge service fees and/or fees for card payments which vary. A fee will apply for payments made by debit and credit cards. Please check this fee with us or your travel consultant when booking. Conditions apply. Refer to back page for full details.

VIVA
HOLIDAYS

NORFOLK ISLAND

HIBISCUS CROWN

★★★★☆

Hibiscus Crown is within Norfolk's town centre and is a short one minute drive or a leisurely five minute walk to shops, cafés and restaurants. It is the perfect property for those who want to be close to the island's attractions yet seek privacy within a subtropical Norfolk Island garden. Nine self-contained one and two bedroom apartments feature a fully equipped kitchen and some offer mountain views. The property has a shared guest laundry and a gas barbecue area.

INCLUDES:

- 7 nights in a One Bedroom Apartment
- Rental car for duration of stay[^]
- Half day Island Tour
- Return coach transfers from airport to hotel

From **\$535*** per person twin share



PARADISE HOTEL & RESORT

★★★★☆

Paradise Hotel & Resort is set on 11 acres of beautifully landscaped subtropical gardens. The beach is a two minute drive away and the shops, museums and restaurants of Burnt Pine are a leisurely stroll from the property. Paradise boasts spacious, hotel-style accommodation and great facilities including a swimming pool, barbecue facilities, live music on selected evenings and a restaurant serving a seasonal menu using produce grown on-site.

INCLUDES:

- 7 nights in a Garden Room
- Island Orientation Tour
- FREE Wi-Fi voucher (1GB per room)#
- **COMPLIMENTARY** all day tea and coffee station
- Scheduled shuttle service to and from Burnt Pine shopping precinct
- Sunset cocktail hour on Monday evenings (5-6pm)
- Islander fruit cocktail on arrival
- Return coach transfers from airport to hotel

From **\$595*** per person twin share



SOUTH PACIFIC RESORT HOTEL

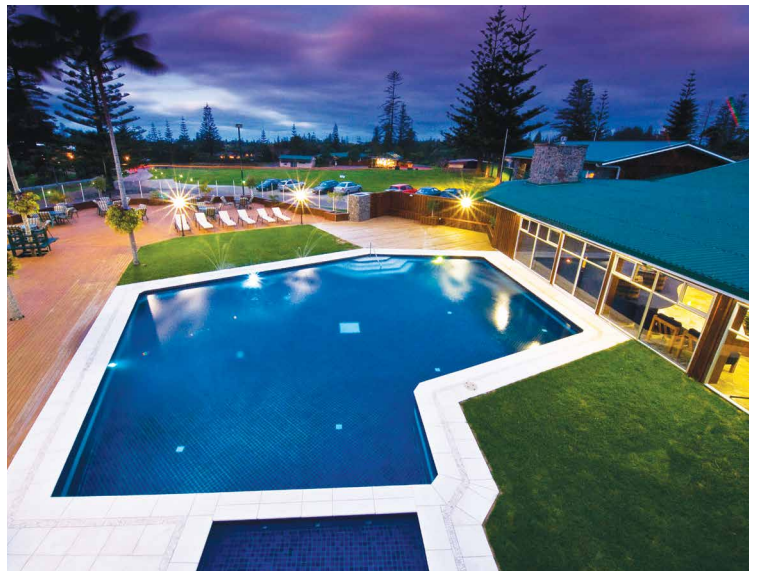
★★★★☆

Set on five acres of beautifully landscaped gardens, South Pacific Resort Hotel is within walking distance of the township of Burnt Pine and only a short drive to historical Kingston, stunning Emily Bay and the golf course. Enjoy the hotel facilities including Cook's Landing Restaurant, coffee shop, swimming pool, games room and complimentary shuttle bus to town.

INCLUDES:

- 7 nights in a Garden Room
- Continental breakfast daily
- Sunset cocktail hour on Monday evenings (5-6pm)
- Scheduled shuttle service to and from Burnt Pine shopping precinct
- Return coach transfers from airport to hotel

From **\$659*** per person twin share



IMPORTANT INFORMATION: *Valid for travel: Hibiscus Crown 13 Dec 20 - 17 Jan, 1 Jun - 31 Aug 21. Add on an extra \$217* per person twin share for travel 1 Apr - 31 May, 1 Sep - 19 Dec 21, 16 Jan - 31 Mar 22. ^Drivers must be over 25 years of age. Includes insurance with an excess of \$2500. Credit card bond is required. Paradise Hotel & Resort: 1-21 Dec, 28 Dec 20 - 1 Feb 21. Travel also available 2 Feb 21 - 31 Mar 22, surcharges apply. #Valid 1-21 Dec, 28 Dec 20 - 1 Feb, 15 Jun - 3 Jul, 20 Jul - 31 Aug, 1-21 Dec, 28 Dec 21 - 1 Feb 22 only. South Pacific Resort Hotel: 1-20 Dec 20, 11 Jan - 28 Feb, 12 Jun - 31 Aug, 1-20 Dec 21, 11 Jan - 28 Feb 22. Add on an extra \$56* per person twin share for travel 21 Dec 20 - 10 Jan, 1 Mar - 11 Jun, 1 Sep - 30 Nov, 21 Dec 21 - 10 Jan, 1-31 Mar 22. Agents may charge service fees and/or fees for card payments which vary. A fee will apply for payments made by debit and credit cards. Please check this fee with us or your travel consultant when booking. Conditions apply. Refer to back page for full details.

NORFOLK ISLAND

OCEAN BREEZE COTTAGES

★★★★

Ocean Breeze Cottages are located in the centre of Norfolk Island with stunning views south to the ocean and north to the mountains. It's an ideal location for peace and quiet, with easy access to all parts of the island. Offering 10 stand-alone, self-contained cottages each with a modern kitchen, en suite bathroom, separate bedroom, an open plan living area and outstanding ocean views from the private deck. Relax in the stunning landscaped gardens, play a game of tennis or enjoy use of the outdoor entertaining area.

INCLUDES:

- 7 nights in a One Bedroom Apartment
- Small automatic 4-door rental car for duration of stay[^]
- Return coach transfers from airport to hotel

From **\$629*** per person twin share



BROAD LEAF VILLAS

★★★★

Nestled in the upper reaches of Watermill Valley, Broad Leaf Villas offers modern and self-contained accommodation, perfect for relaxation and rejuvenation. The property is located in the heart of town and close to the island's heritage architecture, national parks and beaches.

INCLUDES:

- 7 nights in a One Bedroom Superior Villa
- Rental car for duration of stay
- Half day Island Tour
- Local welcome pack
- Return coach transfers from airport to hotel

From **\$669*** per person twin share



ENDEAVOUR LODGE

★★★★

Discover Endeavour Lodge located on four acres of land with breathtaking views of the natural bushland and the rolling waters of the Pacific Ocean. From your private verandah sit back, relax and enjoy the spectacular sunsets and an amazingly wide variety of colourful birdlife. The property is a pleasant five minute drive from Burnt Pine shopping centre, historical ruins, golf course and the beach. The accommodation features native Norfolk pine timber furnishings throughout.

INCLUDES:

- 7 nights in a One Bedroom Apartment
- Rental car for duration of stay
- Return coach transfers from airport to hotel

From **\$729*** per person twin share



IMPORTANT INFORMATION: *Valid for travel: Broad Leaf Villas 1 Jun - 31 Aug 21. Travel also available 15 Nov 20 - 31 May and 1 Sep 21 - 31 Mar 22, surcharges apply. Ocean Breeze Cottages: 1 Jun - 31 Aug 21. Add on an extra \$123* per person twin share for travel 15 Nov - 19 Dec 20, 16 Jan - 31 May, 1 Sep - 19 Dec 21, 16 Jan - 31 Mar 22. ^Includes vehicle damage excess of \$2500. Endeavour Lodge: 1 Jun - 31 Aug 21. Add on an extra \$151* per person twin share for travel 15 Nov - 19 Dec 20, 16 Jan - 31 May, 1 Sep - 19 Dec 21, 16 Jan - 31 Mar 22. Agents may charge service fees and/or fees for card payments which vary. A fee will apply for payments made by debit and credit cards. Please check this fee with us or your travel consultant when booking. Conditions apply. Refer to back page for full details.

NORFOLK ISLAND

WHISPERING PINES COTTAGES

★★★★

Whispering Pines Cottages is an ideal retreat for a romantic and relaxing island holiday. Close to the edge of the Norfolk Island National Park, the property overlooks the stunning slopes and valleys. Enjoy the ambience of these beautiful cottages and the tranquil environment. The warmth and light of these tastefully furnished, open-plan hexagonal designs is both welcoming and appealing. Relax, unwind and get lost in the view of the natural scenery and ocean beyond.

INCLUDES:

- 7 nights in a 2 Bedroom/1 Bathroom Cottage
- Small automatic rental car for duration of stay
- Return coach transfers from airport to hotel

From **\$729*** per person twin share



ALOHA APARTMENTS

★★★★☆

Situated in the heart of Burnt Pine, Norfolk's shopping and café district, Aloha Apartments is within walking distance of the supermarket, restaurants and cafés. It's the perfect choice for those wanting to be close to the town while still being able to enjoy the peace and quiet of private landscaped grounds. The property offers the services and facilities of a hotel with the privacy, space and flexibility of a self-contained apartment.

INCLUDES:

- 7 nights in an Aloha Standard 1 Bedroom Apartment
- Category A (Honda Accord or similar) car hire^
- Half day Island tour
- Return coach transfers from airport to hotel

From **\$785*** per person twin share



CUMBERLAND RESORT AND SPA

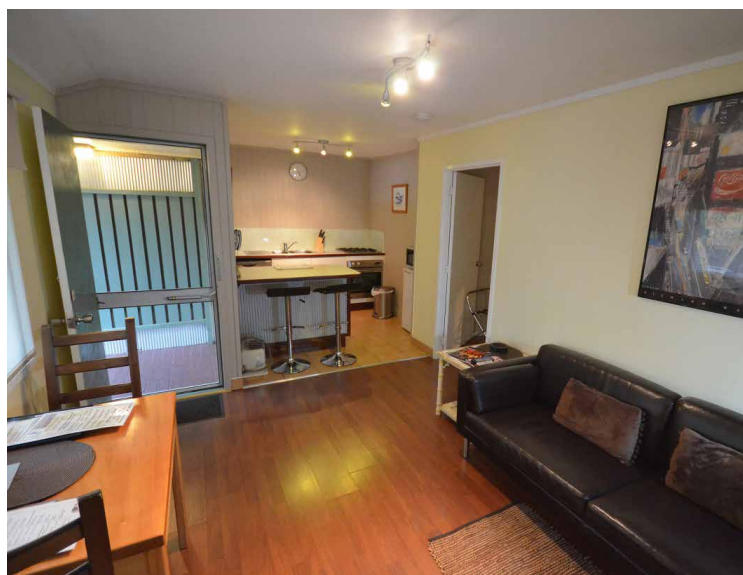
★★★★

Cumberland Resort and Spa on beautiful Norfolk Island is a self-contained boutique resort located a short stroll to shops and restaurants and a few minutes' drive to the beaches and golf course. Villas feature a spa bath or massage spa shower to help you relax and sunny, spacious verandahs with private barbecues. Enjoy use of the property's heated pool, sauna and day spa.

INCLUDES:

- 7 nights in a 1 Bedroom Executive Spa Villa
- Breakfast starter provisions for the first morning of your stay
- Seasonal fruit
- FREE Wi-Fi in public areas
- Return coach transfers from airport to hotel

From **\$955*** per person twin share



IMPORTANT INFORMATION: * Valid for travel: Whispering Pines Cottages: 1 Jun - 31 Aug 21. Add on an extra \$148* per person twin share for travel 15 Nov - 19 Dec 20, 16 Jan - 31 May, 1 Sep - 19 Dec 21, 16 Jan - 31 Mar 22. Aloha Apartments: 1 Nov - 31 May 21. Add on an extra \$97* per person twin share for travel 1 Jun 21 - 31 Mar 22, on sale until 31 Dec 20. ^Includes vehicle insurance. Drivers must 25 years and older and hold a current drivers licence. Petrol is not included. Guest are required to produce a valid credit card or \$2500 cash as a security bond. Cumberland Resort and Spa: 1 Jun - 31 Aug 21. Add on an extra \$159* per person twin share for travel 15 Nov - 19 Dec 20, 11 Jan - 31 May, 1 Sep - 19 Dec 21, 11 Jan - 31 Mar 22. Agents may charge service fees and/or fees for card payments which vary. A fee will apply for payments made by debit and credit cards. Please check this fee with us or your travel consultant when booking. Conditions apply. Refer to back page for full details.

NORFOLK ISLAND



NORFOLK ISLAND BOUNTY DAY CELEBRATION

Bounty Day is a very special event on the Norfolk Island calendar. Every year on the 8th of June, the island celebrates the anniversary of the arrival of the Pitcairn Islanders to Norfolk Island in 1856. The Pitcairners were the descendants of the infamous English sailors of Mutiny on the Bounty and the Tahitian women who began a new life on isolated Pitcairn Island. To celebrate Bounty Day join the descendants as they dress in period costume to re-enact the landing of their forbearers, sing hymns, lay wreaths and enjoy a community picnic highlighting traditional food.

INCLUDES:

- 7 nights at Coast Norfolk Island in a One Bedroom Seaview Apartment ★★☆☆
- Rental car for duration of stay including insurance
- Bike hire
- Use of snorkelling gear
- Car parking
- Half day Bounty Day Picnic including Bounty Mutineer descendants procession, morning tea, traditional island picnic lunch, complimentary selected alcoholic and non-alcoholic beverages as well as local entertainment
- 3 hour Convict Kingston Tour including guided tour of World Heritage Listed Kingston and refreshments
- 3 hour Commandants Dinner including interactive show, 3-course dinner and guided transfers
- 3 hour Taste of Norfolk including tasting of honey, local sausages and banana fritters
- 3 hour Progressive Dinner including home-cooked 3-course dinner and guided transfers between lovely island homes venues
- 3 hour Island Fish Feast including a glamorous, seated picnic with dinner of fresh, local fish and a range of seasonal island dishes as well as dessert and entertainment by a local singer and Tahitian-style dancers
- Return coach transfers from airport to hotel

Departs: Monday 7 June 2021

From **\$1,299*** per person
twin share

IMPORTANT INFORMATION: * Valid for travel: Bounty Day Celebration 7-14 Jun 21. Agents may charge service fees and/or fees for card payments which vary. A fee will apply for payments made by debit and credit cards. Please check this fee with us or your travel consultant when booking. Conditions apply. Refer to back page for full details.

VIVA
HOLIDAYS

NORFOLK ISLAND



NORFOLK ISLAND DISCOVERY

Spend seven nights on this island paradise and find out why Norfolk Island is unlike anywhere else. Set on two acres of lush, sub-tropical gardens with towering Norfolk Pines, Channers on Norfolk offers comfortable, fully self-contained accommodation close to the restaurants and shops of Burnt Pine and is the perfect base for your Norfolk discovery. Learn about the World Heritage Listed Kingston area, taste the delicious island produce, dine with locals in their homes during a Progressive Dinner tour and feast on fresh fish with entertainment.

INCLUDES:

- 7 nights at Channers on Norfolk Gardenside Apartments in a One Bedroom Gardenside Apartment ★★☆☆
- Free Wi-Fi
- Half day Island Orientation Tour
- 3 hour Convict Kingston Tour including guided tour of World Heritage Listed Kingston and refreshments
- 3 hour Taste of Norfolk including tasting of honey, local sausages and banana fritters

- 3 hour Progressive Dinner including a 3-course dinner and guided transfers between venues
- 3 hour Island Fish Feast including a glamorous, seated picnic with dinner of fresh, local fish and a range of seasonal island dishes as well as dessert and entertainment by a local singer and Tahitian-style dancers
- Return coach transfers from airport to hotel

From **\$855*** per person
twin share

YOUR VIVA HOLIDAYS PREFERRED AGENT:

TRAVEL TIME

Ph: (02) 9980 9791

sales@traveltime.com.au

www.traveltime.com.au

WE'RE
PROUD TO BE
ATAS
travel accredited

CATO
Council of Australian Tour Operators

VIVA
HOLIDAYS

Travel Agent Bookings and Enquiries Phone: 13 27 87

IMPORTANT BOOKING CONDITIONS

*Agents may charge service fees and/or fees for card payments which vary. A fee will apply for payments made by debit and credit cards. Please check this fee with us or your travel consultant when booking. Conditions apply. Prices correct as at 25 Nov 20 but may fluctuate if surcharges, fees, taxes or currency change. Offers ends 31 Mar 21, except Aloha Apartments which is on sale until 31 Dec 20. Offers subject to availability. Amounts payable to third parties not included. Please check all prices, availability and other information with your travel consultant before booking. Room upgrades and late check-outs are subject to availability unless otherwise stated. Bookings must be made direct with Viva Holidays or a travel agent. Package cancellation fees apply. Ratings provide a general indication of the standard of accommodation. These are our own views and not related to any other rating system. 3 star (★) indicate a comfortable standard of accommodation, 4 star indicate superior standard and 5 star indicate deluxe standard. A half star (☆) indicates an additional half rating. All savings and bonus nights (if applicable) are included in the advertised price. Offers may be withdrawn without notice and are not combinable with any other offers unless stated. Valid for travel: Norfolk Island Discovery 15 Nov 20 - 31 Mar 22. The Viva Holidays General Booking Conditions apply, available at www.vivaholidays.com.au/policies/booking-conditions. Other conditions apply - ask for details. Viva Holidays Pty Ltd ABN 78 634 662 294.